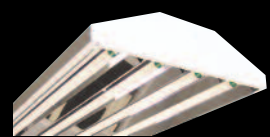
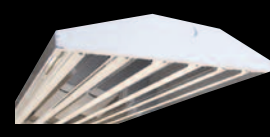


HIMAX T5 & T8 High-Bay Fixtures



T5L & T8L 2-, 3- & 4-Lamp LINEAR

- Aluminum Housing
- Lamp Life Is Up To 20,000 Hours.
- Applications:
 - Warehouse
 - Distribution Center
 - Manufacturing
 - Commercial



T5L & T8L 6- and 8-Lamp LINEAR

- Aluminum Housing
- Lamp Life Is Up To 20,000 Hours.
- Applications:
 - Warehouse
 - Distribution Center
 - Manufacturing
 - Commercial



T5L & T8L 10-Lamp LINEAR

- Aluminum Housing
- Lamp Life Is Up To 20,000 Hours.
- Applications:
 - Warehouse
 - Distribution Center
 - Manufacturing
 - Commercial



T5L & T8L 2-, 3- & 4-Lamp LINEAR

- Steel Housing
- Lamp Life Is Up To 20,000 Hours.
- Applications:
 - Warehouse
 - Distribution Center
 - Manufacturing
 - Commercial



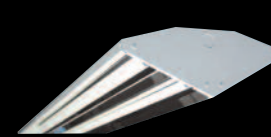
T5L & T8L 6-, 8- & 10-Lamp LINEAR

- Steel Housing
- Lamp Life Is Up To 20,000 Hours.
- Applications:
 - Warehouse
 - Distribution Center
 - Manufacturing
 - Commercial



T5ECO & T8ECO 3, 4, 6 & 8-Lamp ECONOMY

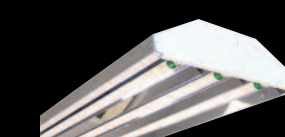
- Aluminum Housing
- Lamp Life Is Up To 20,000 Hours.
- Applications:
 - Warehouse
 - Distribution Center
 - Manufacturing
 - Commercial



T5 & T8 4, 6 & 8-Lamp VMAX

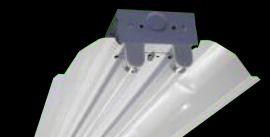
- Aluminum Housing
- Lamp Life Is Up To 20,000 Hours.
- Applications:
 - Warehouse
 - Distribution Center
 - Manufacturing
 - Commercial

T5 & T8 4-foot & 8-foot High-Bay Fixtures



T5EN 4- & 6-Lamp 8-FOOT

- Aluminum Housing
- Lamp Life Is Up To 20,000 Hours.
- Applications:
 - Warehouse
 - Distribution Center
 - Manufacturing
 - Commercial



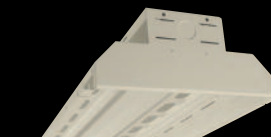
T5IN & T8IN 1, 2, 3, 4 & 6-Lamp 8-FOOT

- Aluminum Housing
- Lamp Life Is Up To 20,000 Hours.
- Applications:
 - Warehouse
 - Distribution Center
 - Manufacturing
 - Commercial



T8EM 4-, 6- & 8-Lamp 8-FOOT

- Aluminum Housing
- Lamp Life Is Up To 20,000 Hours.
- Applications:
 - Warehouse
 - Distribution Center
 - Manufacturing
 - Commercial



T5NI 1, 2, 3, 4- & 6-Lamp NARROW

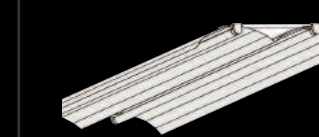
- Aluminum Housing
- Lamp Life Is Up To 20,000 Hours.
- Applications:
 - Warehouse
 - Distribution Center
 - Manufacturing
 - Commercial



T5IH & T8IH 3- & 6-Lamp 8-FOOT

- Aluminum Housing
- Lamp Life Is Up To 20,000 Hours.
- Applications:
 - Warehouse
 - Distribution Center
 - Manufacturing
 - Commercial

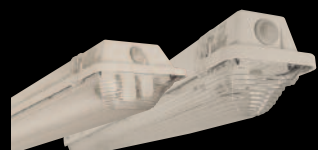
Retrofits



RETROFIT KITS

- Aluminum Housing
- Lamp Life Is Up To 20,000 Hours.
- Applications:
 - Warehouse
 - Distribution Center
 - Manufacturing
 - Commercial

T5 & T8 Vapor Tight/Extreme Environment Fixtures



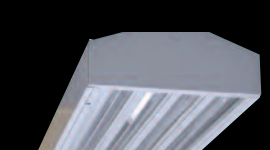
T5VT / T8VT 1, 2 & 3-Lamp VAPOR TIGHT

- Aluminum Housing
- Lamp Life Is Up To 20,000 Hours.
- Applications:
 - Warehouse
 - Distribution Center
 - Manufacturing
 - Commercial



T5/T8 VT4X 3, 4, 5 & 6-Lamp EXTREME

- Aluminum Housing
- Lamp Life Is Up To 20,000 Hours.
- Applications:
 - Warehouse
 - Distribution Center
 - Manufacturing
 - Commercial



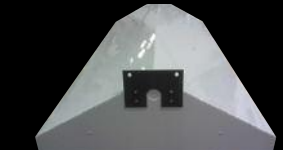
T5FR & T8FR 4- & 6-Lamp COLD STORAGE

- Aluminum Housing
- Lamp Life Is Up To 20,000 Hours.
- Applications:
 - Warehouse
 - Distribution Center
 - Manufacturing
 - Commercial



T5 & T8 4- & 6-Lamp EXTREME

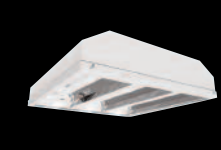
- Steel Housing
- Lamp Life Is Up To 20,000 Hours.
- Applications:
 - Warehouse
 - Distribution Center
 - Manufacturing
 - Commercial



T5-DT 4- & 6-Lamp EXTREME

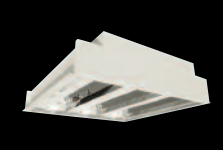
- Steel Housing
- Lamp Life Is Up To 20,000 Hours.
- Applications:
 - Warehouse
 - Distribution Center
 - Manufacturing
 - Commercial

HIMAX TT5 2x2 Fixtures



TT5-2X2P 3-, 4- & 5-Lamp PENDANT

- Aluminum Housing
- Lamp Life Is Up To 20,000 Hours.
- Applications:
 - Warehouse
 - Distribution Center
 - Manufacturing
 - Commercial



TT5-2X2P 3-, 4- & 5-Lamp RECESSED

- Aluminum Housing
- Lamp Life Is Up To 20,000 Hours.
- Applications:
 - Warehouse
 - Distribution Center
 - Manufacturing
 - Commercial



TT5-2X2P 3-, 4- & 5-Lamp SURFACE

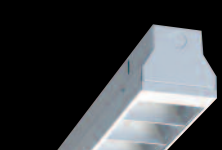
- Aluminum Housing
- Lamp Life Is Up To 20,000 Hours.
- Applications:
 - Warehouse
 - Distribution Center
 - Manufacturing
 - Commercial

T5 & T8 Retail Fixtures



T5HG 4-, 6- & 8-Lamp TROFFER

- Aluminum Housing
- Lamp Life Is Up To 20,000 Hours.
- Applications:
 - Warehouse
 - Distribution Center
 - Manufacturing
 - Commercial



T5MX 1- & 2-Lamp 4- & 8-Foot

- Aluminum Housing
- Lamp Life Is Up To 20,000 Hours.
- Applications:
 - Warehouse
 - Distribution Center
 - Manufacturing
 - Commercial



T5 & T8 2-, 3- & 4-Lamp RETAIL

- Aluminum Housing
- Lamp Life Is Up To 20,000 Hours.
- Applications:
 - Warehouse
 - Distribution Center
 - Manufacturing
 - Commercial

Skylights



ASL-4x4 SKYLUME SKYLIGHT

- 4x4 Advanced Skylight Eliminates Up To 90% Of Electrical Lighting Needs & Saves \$\$
- Radiation Barrier Yields R-48 Value
- Simple, Leak-Proof Installation

HIMAX Adjustable Fixtures



T5A 6- & 8-Lamp ADJUSTABLE

- Aluminum Housing
- Lamp Life Is Up To 20,000 Hours.
- Applications:
 - Warehouse
 - Distribution Center
 - Manufacturing
 - Commercial



TT5A 6- & 8-Lamp ADJUSTABLE

- Steel Housing
- Lamp Life Is Up To 20,000 Hours.
- Applications:
 - Warehouse
 - Distribution Center
 - Manufacturing
 - Commercial



T8A 6- & 8-Lamp ADJUSTABLE

- Steel Housing
- Lamp Life Is Up To 20,000 Hours.
- Applications:
 - Warehouse
 - Distribution Center
 - Manufacturing
 - Commercial

T5 & T8 MiniStrips



T8 ST Ministrips

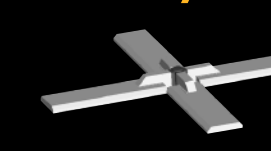
- Aluminum Housing
- Lamp Life Is Up To 20,000 Hours.
- Applications:
 - Warehouse
 - Distribution Center
 - Manufacturing
 - Commercial



T5 & T8 MS Ministrips

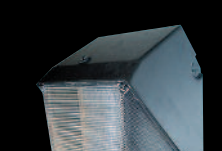
- Aluminum Housing
- Lamp Life Is Up To 20,000 Hours.
- Applications:
 - Warehouse
 - Distribution Center
 - Manufacturing
 - Commercial

Site/Area Fixtures, Wallpacks & Floods



SITEMAX AREA LIGHTING

- Aluminum Housing
- Lamp Life Is Up To 20,000 Hours.
- Applications:
 - Warehouse
 - Distribution Center
 - Manufacturing
 - Commercial



TT5-SWP WALLPACK

- Aluminum Housing
- Lamp Life Is Up To 20,000 Hours.
- Applications:
 - Warehouse
 - Distribution Center
 - Manufacturing
 - Commercial



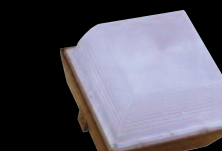
TT5-DLWP WALLPACK

- Aluminum Housing
- Lamp Life Is Up To 20,000 Hours.
- Applications:
 - Warehouse
 - Distribution Center
 - Manufacturing
 - Commercial



TT5-FLP FLOOD

- Steel Housing
- Lamp Life Is Up To 20,000 Hours.
- Applications:
 - Warehouse
 - Distribution Center
 - Manufacturing
 - Commercial



CANOPY FIXTURES

- Steel Housing
- Lamp Life Is Up To 20,000 Hours.
- Applications:
 - Warehouse
 - Distribution Center
 - Manufacturing
 - Commercial

FLUORESCENT • INDUCTION • LED

AEI LIGHTING
 MAIL 1113 Birchwood Ave.
 Mesa, AZ 85210
 TEL 480.733.6594
 FAX 480.733.6596
 WEB www.aeilighting.com

BRINGING YOU OUT OF THE DARK AGES.