



FEATURES & BENEFITS

- **Push Button Access** - Industry Leading Maintenance Advantage giving access to all internal components in seconds without the use of tools and removal of lamps!
- **Over 50% Energy Savings Compared to HID** and old fluorescent systems
- **Longer Lamp Life For T5HO!** 25,000hrs @ 3hrs/start and 35,000hrs @ 12hrs/start
- **95% Lumen Maintenance For T5HO** compared to Metal Halide that depreciates 40-60%
- **Vented Housing** construction for optimal ballast performance and long life
- **Instant On...Instant Restrike...No Flicker!** Color consistent across all fixtures
- **Auto On/Off Occupancy Sensors Factory Installed** and paired with Programmed Start ballasts
- **Superior Visual Comfort Over HID** with higher CRI from AEI's fluorescent fixtures including a wide range of color temperatures

SPECIFICATIONS

HOUSING: - Code Gauge steel body with post powdercoating standard. Properly vented housing keeps ballast cool. Cold storage housing without venting available on request.

REFLECTIVE: Specular Miro4® reflectors standard. White reflectors are optional. Consult AEI for other reflector options.

ELECTRICAL: Wired per specified voltage using electronic ballast rated for 75 degree Celsius (C). 90 degree Celsius ballast rating available for high ambient applications. The TT5-2X2S fixtures are U.L. Listed for damp locations. TT5 lamps are rated at 15,000 & 20,000 hours.

MOUNTING: The HiMax TT5-2X2S fixtures are designed to be surface mounted.

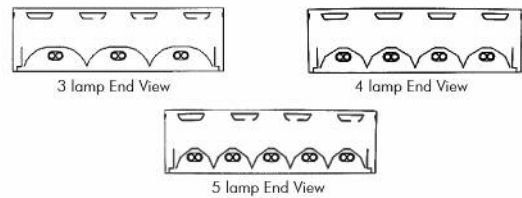
Featuring "Push Button Access"



- EASY ACCESS**
No Parts To Drop
- REDUCED LABOR**
Opens In Seconds
- SAVES MONEY**
Exclusive Features

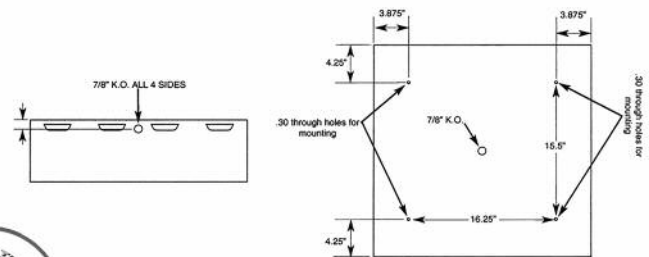
Wireway access in seconds without removing lamps or use of any tools!

DIMENSIONS



| | Length | Width | Height |
|------------------------|--------|-------|--------|
| TT5-2X2S-3, 4 & 5 LAMP | 24" | 24" | 7" |

INSTALLATION DIAGRAM



ORDERING GUIDE



BRINGING YOU OUT OF THE DARK AGES!

| Fixture Model | Housing | # Of Lamps Wattage | Lens | Voltage | Lamp Color | Options | Mounting |
|---|---------|---|---|--|---|--|--|
| TT5-2X2S | | | | | | | |
| CONSULT AEILighting.com for Photometric Information On This Fixture | | # OF LAMPS 3=3 Lamps 4=4 Lamps 5=5 Lamps WATTAGE 40=40 Watts 50=50 Watts 55=55 Watts | CL=Clear Acrylic PR=Prismatic PC=Polycarbonate VR=Vandal Resistant Leave Blank If No Lens | VOLTAGE 12=120V 27=277V 34=340V 48=480V UNI=Universal UNI90=90C Universal | 30=3000K 35=3500K 41=4100K 50=5000K Leave Blank If No Lamps | SENSORS OCI=Asie Sensor OC3=360 Degree Sensor OCLI=360 Degree Low Temp Sensor Consult Factory For More Options CORDS / PLUGS X'C=Length + Cord Only X'CX=Length/Cord + Style/Plug Consult Factory For More Options BALLASTS EM=XXXX=Emergency Ballast/Lumens DIM=Dimming Ballast HOUSING/REFLECTORS WH=White Reflector CT=Cold Temp (no venting) OTHER CST=Custom Consult Factory For Custom Applications & Custom Ordering Number | CST=Custom Mounting Consult Factory. This may include knock out placement or pre-drilled mounting holes. |

AEI LIGHTING INC.
1113 West Birchwood Avenue
Mesa, AZ 85210
TEL 480.733.6594
FAX 480.733.6596
WEB www.aeilighting.com

Project Name _____ Fixture Type _____
 Catalog # _____ Quantity _____