

# T8 VT4X 332 432 532 632



Energy Saving High-Performance Weatherproof Enclosures

For Food Processing, Commercial Kitchens, Parking Garages, Car Washes & More

3-, 4-, 5- & 6-Lamp  
T8 Vaportight Fixtures  
for Extreme Weather, Sanitized &  
High-Ambient Environments



## FEATURES & BENEFITS

- T8 Lamps** - AEI's vaportight, gasketed VT4X enclosure fixtures come in 54-Watt 3-, 4-, 5- and 6-lamp cross sections. The T8 VT4X Series, with T8 lamps, is also available. These fixtures are injection molded for maximum strength in harsh environments for use primarily to provide a degree of protection against corrosion, windblown dust and rain, splashing water, hose-directed water, temporary immersions in water and damage from external ice formation.
- Tool-Free Access** - AEI's vaportight VT4X series features Tool-Free removal of the lens and gear tray for easy wireway access in seconds.



Food Processing Application

## SPECIFICATIONS

**HOUSING:** - The VT4X is designed specifically for T5 & T8 lamps and comes fully assembled. The housing is weather-resistant for damp or wet locations and is watertight for optimal performance and durability. The VT4X geartray is high-reflective, pre-painted CRS formed at perimeters w/stiffeners for rigidity.

**REFLECTIVE:** White ballast cover standard. Highly specular MIRO 4 reflectors optional. Consult factory for more details on reflective options.

**LENSES:** Injection molded polycarbonate diffusers with lineal prisms standard. Damage resistance is ideal for parking garages. Consult AEI factory for other lens options.

**MOUNTING/HARDWARE:** One-piece stainless steel latches standard. Standard fixture is sold with mounting brackets. Stainless steel mounting brackets are optional. Stainless steel hardware recommended for high pressure-wash environments.

**LISTING:** The T8 VT4X is NSF & NEMA 4X Rated. Also IP67 Certified, RoHS Compliant & UL Listed for Damp/Wet Locations.

## VT4X VAPORTIGHT FIXTURES

**NSF** NSF Tested & Certified For Food Processing Areas

**UL** UL-Approved Wet Location Luminaire

**NEMA 4X** NEMA-Rated Fixture

**IP67 CERTIFIED** Totally Protected Against Dust & Temporary Immersions

**RoHS COMPLIANT** Components are compliant with RoHS directives & levels

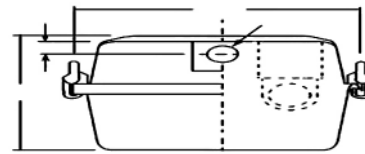
**EASY ACCESS**  
No Tools Needed

**INJECTION MOLDED**  
For Maximum Strength & Precise Detail

**VAPOR TIGHT**  
All Weather, Extreme Environment Fixture

**T8 or T5 LAMPS**  
Available In A Variety of Lamp Options

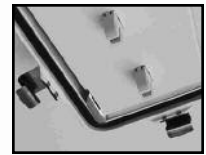
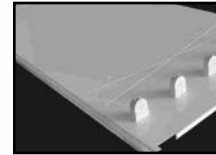
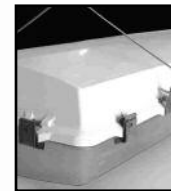
## DIMENSIONS



Stainless steel two-part latch can be made tamper-resistant

	Length	Width	Height
T8 VT4X 3-, 4-Lamp	51"	14.5"	6"
T8 VT4X 5-, 6-Lamp	51"	14.5"	6"

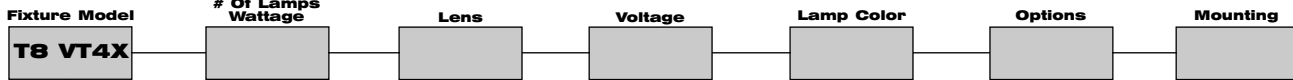
\*For custom applications or questions about the VT4X Series please consult the AEI factory.



The T8 VT4X has stainless steel hardware for maximum durability and twelve (12) latches per unit for positive lens retention. There are four geartray options. Integral pin hinges provide for hinging or latching from either side.

\*Dimensions are subject to change without notice. Consult factory for details.

## ORDERING GUIDE



**CONSULT**  
AEILighting.com  
for  
Photometric  
Information  
On This  
Fixture

<b>MODEL</b> T8 VT4X=T8	<b># OF LAMPS</b> 3=3 Lamps 4=4 Lamps 5=5 Lamps 6=6 Lamps <b>WATTAGE</b> 32=32 Watts <i>Consult Factory When Application</i>	<b>LENS</b> PC=Polycarbonate AC=Impact Resistant Acrylic	<b>VOLTAGE</b> 12=120V 97=97.7V 34=34.7V 48=48.0V UNI=Universal UNIP0=90C Universal	<b>LAMP COLOR</b> 30=3000K 35=3500K 41=4100K 50=5000K 65=6500K <i>Leave Blank If No Lamps</i> <i>800 Series Standard, Add 77 in front of color for 700 Series applications</i>	<b>SENSORS</b> OC1=Alsie Sensor OC3=360 Degree Sensor OCLT=360 Degree Low Temp Sensor <i>Consult Factory For More Options</i> <b>CORDS / PLUGS</b> X'C=Length + Cord Only X'CXp=Length/Cord + Style/Plug <i>Consult Factory For More Options</i> <b>BALLASTS</b> EMXXXX=Emergency Ballast/Lumens DIM=Dimming Ballast <i>Consult Factory For Ballast Options</i> <b>HOUSING/REFLECTORS</b> M4=MIRO 4 Reflector	<b>OTHER</b> CTD=Cooled Lamps, TG=Tube Guards CST=Custom <i>Consult Factory For Custom Applications and Ordering Number</i>	<b>Mounting</b> VH=V-Hook HK=3/4" Hook GPLX=Grippler + Style (L,S,T,Y) <i>Consult Options Guidelines For Grippler Details</i> HUB=3/4" Hub HUB=Length + Galvanized Stem SB=3/4" Slide Box Assembly <b>Hub and Stem Optional</b> SP=3/4" Single Point Bracket <b>Hub and Stem Optional</b>
----------------------------	--	--	--	--	--	--	--

**AEI LIGHTING INC.**  
1113 West Birchwood Avenue  
Mesa, AZ 85210  
TEL 480.733.6594  
FAX 480.733.6596  
WEB www.aeilighting.com

Project Name \_\_\_\_\_ Fixture Type \_\_\_\_\_

Catalog # \_\_\_\_\_ Quantity \_\_\_\_\_

ADVANCED ENERGY IDEAS, INC. T8 VT4X 332 432 532 632