

T5IE 354 454 654 854

3, 4, 6 & 8 Lamp T5HO
4FT & 8FT High-Bay I-Beam Fixtures



HiMax Energy Saving High-Performance
Fluorescent Lighting Systems

FEATURES & BENEFITS

- **Tool-Free Maintenance** - AEI leads the industry with access to all internal components without the use of tools.
- **Over 50% Energy Savings Compared to HID** - T5HO lamps and ballasts save more than 50% over older HID and T12 Fluorescent lighting systems.
- **Longer Lamp Life For T5HO!** T5HO lamps are rated for up to 35,000 hours, nearly twice that of typical fluorescent and HID lamps.
- **95% Lumen Maintenance For T5HO** - HID light levels drop as much as 60% as the lamps age. T5HO light levels maintain 95% over the life of the lamp.
- **Instant On...Instant Restrike...No Flicker!** T5HO ballast technology eliminates flicker and provides instant on and instant restrike while maintaining light levels during dips and peaks.
- **Cool Operation** - Vented aluminum housing construction provides optimal ballast performance and long life.
- **Color Quality and Consistency** - T5HO lamps are 80CRI or greater and provide excellent color quality over the life of the lamp, thus enhancing visual comfort.
- **Factory Installed Occupancy Sensors** - Auto on/off functions are available for energy savings and extended life using integral sensor design.

SPECIFICATIONS

CONSTRUCTION: Aluminum Housing is standard. Housing is vented to keep ballast cool in a wide range of operating temperatures.

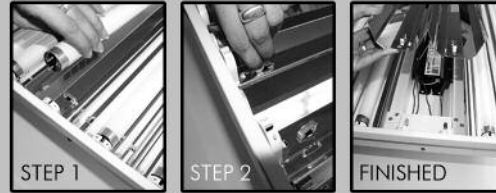
REFLECTOR DESIGN: Specular Miro4® reflectors standard. White reflectors are optional. Consult AEI for other reflector options.

ELECTRICAL: 120 or 277V, 75°C programmed start ballasts standard. Universal voltage or 347, and 480V & 90°C ballasts as well as other options are available upon request. Emergency ballasts available.

MOUNTING: Surface, Chain or Pendant mounting options available. See our Labor Saving Installation Guide for industry exclusive mounting designs.

LISTING: UL Listed for Damp Locations

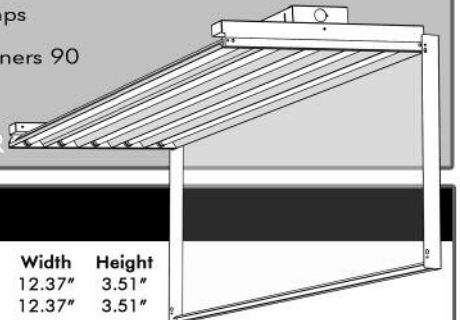
Featuring "Tool-Free Access"



EASY ACCESS
No Tools Needed
REDUCED LABOR
Opens In Seconds
SAVES MONEY
Exclusive Features

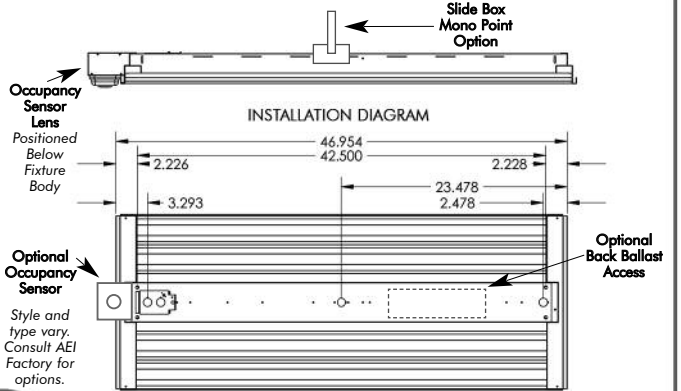
Step 1.
Remove Center Lamps
Step 2.
Twist 1/4 Turn Fasteners 90
Degrees.

OPTIONAL PUSH
BUTTON LENS DOOR



DIMENSIONS

	Length	Width	Height
T5IE-354	46.95"	12.37"	3.51"
T5IE-454	46.95"	12.37"	3.51"
T5IE-554 654	46.95"	15.38"	3.51"
T5IE-854	46.95"	20.90"	3.51"



T5IE-654 MOUNTING VIEW

*Dimensions are subject to change without notice. Consult factory for details.

ORDERING GUIDE



BRINGING YOU OUT OF THE DARK AGES!

Fixture Model **T5IE** # Of Lamps Wattage Lens Voltage Lamp Color Options Mounting

CONSULT
AEILighting.com
for
Photometric
Information
On This
Fixture

OF LAMPS
3=3 Lamps 4=4 Lamps
6=6 Lamps 8=8 Lamps
WATTAGE
54=54W 4-foot Nominal Length
**Consult Factory When Application
Requires Other Wattages**

Lens
CL=Clear Acrylic PR=Prismatic
PC=Polycarbonate VR=Vandal Resistant
Leave Blank If No Lens

VOLTAGE
12=120V 27=277V
34=347V 48=480V
UNL=120-277V 90C=120-277V 90°C

Voltage
30=3000K 35=3500K
41=4100K 50=5000K 65=6500K
Leave Blank If No Lamps

LAMP COLOR
OCI=Idle Sensor OC3=360 Degree Sensor
OCLT=360 Degree Low Temp. Sensor
Consult Factory For More Options

CORDS / PLUGS
XC=Length + Cord Only
X'CX'=Length/Cord + Style/Plug
Consult Factory For More Options

BALLASTS
EMXXX=Emergency Ballast/Lumens
DIM=Dimming Ballast
Consult Factory For Ballast Options

HOUSING/REFLECTORS
BFT=8-Foot Fixture UL=Uplight
WH=White Reflector
OTHER
CTD=Coated Lamps, TG=Tube Guards
BA=Back Access To Ballast, CST=Custom
**Consult Factory For Custom
Applications and Ordering Number**

Mounting
VH=V-Hook HK=3/4" Hook
GPX=Grippler + Style (L,S,T,Y)
**Consult Options Guidelines For
Grippler Details**
HUB=3/4" Hub
X'ST=Length + Galvanized Stem
SB=3/4" Slide Box Assembly
Hub and Stem Optional
SP=3/4" Single Point Bracket
Hub and Stem Optional

AEI LIGHTING INC.
1113 West Birchwood Avenue
Mesa, AZ 85210
TEL 480.733.6594
FAX 480.733.6596
WEB www.aeilighting.com

Project Name _____ Fixture Type _____
Catalog # _____ Quantity _____

ADVANCED ENERGY IDEAS, INC.
T5IE 354 454 654 854