

T5EX 454 654

4- & 6-Lamp 4-Foot T5 High-Bay Fixture for Extreme Environments



Himax Energy Saving High-Performance Fluorescent Lighting Systems

FEATURES & BENEFITS

- **Over 50% Energy Savings Compared to HID** - New T5HO Lamp/Electronic Ballast combinations save more than 50% over older HID and T12 Fluorescent lighting systems.
- **Longer Lamp Life For T5HO!** T5HO lamps are rated for up to 36,000 hours, nearly twice that of typical fluorescent and HID lamps when used with programmed start ballasts.
- **95% Lumen Maintenance For T5HO** - HID light levels drop as much as 60% as the lamps age. New T8 light levels maintain up to 95% over the life of the lamp.
- **Instant On...Instant Restrike...No Flicker!** T5HO ballast technology eliminates flicker and provides instant on & instant restrike while maintaining light levels during power dips & peaks.
- **Cool Operation** - Vented aluminum housing construction provides optimal ballast performance and long life.
- **Color Quality and Consistency** - T5HO lamps are 70CRI or greater, providing excellent color quality over the life of the lamp, enhancing visual comfort.
- **Factory Installed Occupancy Sensors** - Auto on/off functions are available for energy savings and extended life using Programmed-Start Ballast technology and integral sensor design.

SPECIFICATIONS

CONSTRUCTION: 0.040" Aluminum Housing is standard. Housing is vented to keep ballast cool in a wide range of operating temperatures.

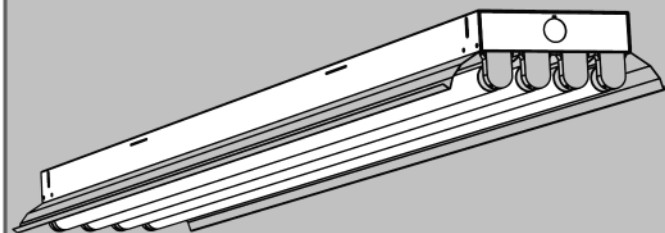
REFLECTOR DESIGN: Standard white ballast cover is 90% reflective. Optional specular Miro4® & white reflectors available. Narrow and wide distribution offered. Consult AEI for other options.

ELECTRICAL: 120 or 277V, 75°C instant start ballasts are standard. Universal voltage or 347, 480V and 90°C ballasts as well as other options are available upon request. Emergency ballasts available.

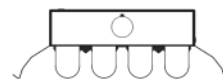
MOUNTING: Surface, Chain or Pendant mounting options available. See our Labor Saving Installation Guide for industry exclusive mounting designs.

LISTING: UL Listed for Damp Locations.

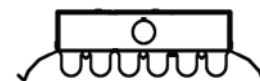
FEATURES 4- or 6-LAMP DESIGN



DIMENSIONS



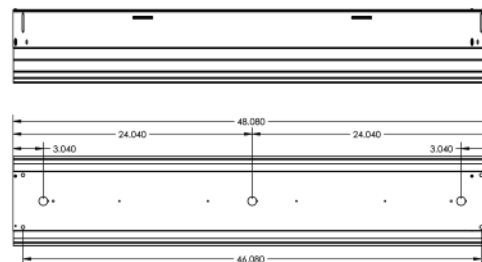
T5EX-454 END VIEW



T5EX 654 END VIEW

	Length	Width	Height	*For dimensions of sensed or custom fixtures consult factory or contact your local AEI representative
T5EX-454	48.13"	9.0"	2.90"	
T5EX-654	48.13"	9.0"	2.90"	

INSTALLATION DIAGRAM



*Dimensions are subject to change without notice. Consult factory for details.

ORDERING GUIDE



BRINGING YOU OUT OF THE DARK AGES!

Fixture Model	# Of Lamps Wattage	Voltage & Ballast Factor	Lamp Color	Fixture Options	Mounting
T5EX					

CONSULT
AEILighting.com
for
Photometric
Information
On This
Fixture

OF LAMPS
4=4 Lamps 6=6 Lamps
WATTAGE
54=54W 4-foot Nominal Length
Consult Factory When Application Requires Other T8 Wattages

VOLTAGE
12=120V 27=277V 34=347V
48=480V UNI=120-277V
90C=120-277V 90°C
BALLAST FACTOR
ISL=Instant Start Low Ballast Factor
ISN=Instant Start Normal Ballast Factor
ISH=Instant Start High Ballast Factor
PS=Program Start / Rapid Start
PSH=Program Start/ Rapid Start HB Factor
PS Series ballast recommended with occupancy sensors.

30=3000K 35=3500K
41=4100K 50=5000K 65=6500K
Leave Blank if No Lamps
800 Series Standard. Add '7' in front of color for 700 Series applications.

SENSORS
OCI=Active Sensor OC3=360 Degree Sensor
OCLT=360 Degree Low Temp Sensor
When specific brand of sensor is required, please add to 'notes' line in purchase order. Consult Factory For More Sensor Options.
CORDS / PLUGS
XC=Length + Cord Only
X'CP=Length/Cord + Style/Plug
Consult Factory For More Options
BALLASTS
E'WXXX=Emergency Ballast/Lumens
DIM=Dimming Ballast
Consult Factory For Ballast Options. This fixture may have some limitations.
HOUSING/REFLECTORS
WH=White Reflector

OTHER
CTD=Coated Lamps TG=Tube Guards
CST=Custom
Consult Factory For Custom Apps & Ordering Number

VH=V-Hook HK=3/4" Hook
GPX=Grippler + Style (L,S,T)
Consult Options Guidelines For Grippler Details
HUB=3/4" Hub
X'ST=Length + Galvanized Stem
SB=3/4" Slide Box Assembly
Hub and Stem Optional
SP=3/4" Single Point Bracket
Hub and Stem Optional

AEI LIGHTING INC.
1113 West Birchwood Avenue
Mesa, AZ 85210
TEL 480.733.6594
FAX 480.733.6596
WEB www.aeilighting.com

Project Name _____ Fixture Type _____

Catalog # _____ Quantity _____

ADVANCED ENERGY IDEAS, INC.

T5EX 454 654