

T5CLS-1054 1000W REPLACEMENT

T5HO Classic Steel High-Bay & Low-Bay Industrial Fixtures



HiMax Energy Saving High-Performance
Fluorescent Lighting Systems
Classic Series

FEATURES & BENEFITS

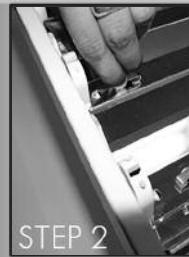
- **Tool-Free Maintenance** - AEI leads the industry with access to all internal components without the use of tools.
- **Over 50% Energy Savings Compared to HID** - T5HO lamps and ballasts save more than 50% over older HID and T12 Fluorescent lighting systems.
- **Longer Lamp Life For T5HO!** T5HO lamps are rated for up to 35,000 hours, nearly twice that of typical fluorescent and HID lamps.
- **95% Lumen Maintenance For T5HO** - HID light levels drop as much as 60% as the lamps age. T5HO light levels maintain 95% over the life of the lamp.
- **Instant On...Instant Restrike...No Flicker!** T5HO ballast technology eliminates flicker and provides instant on and instant restrike while maintaining light levels.
- **Cool Operation** - Ventilated housing construction provides optimal ballast performance and long life.
- **Color Quality and Consistency** - T5HO lamps are 80CRI or greater, providing excellent color quality over the life of the lamp, thus enhancing visual comfort.
- **Factory Installed Occupancy Sensors** - Auto on/off functions are available for energy savings and extended life using integral sensor design.

Featuring "Tool-Free Access"



STEP 1

Step 1.
Remove two center lamps



STEP 2

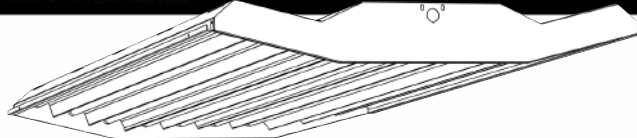
Step 2.
With hands at each end pinch



FINISHED

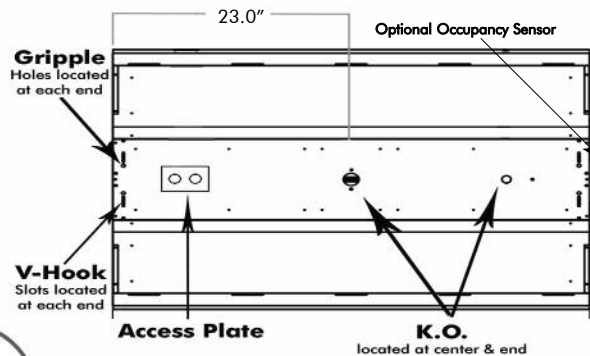
Step 3.
Pull cover up & expose wireway

DIMENSIONS



T5CLS-1054 Length 46.0" Width 28.75" Height 3.80"

INSTALLATION DIAGRAM



*Dimensions are subject to change without notice. Consult factory for details.

SPECIFICATIONS

CONSTRUCTION: Code-Gauge Post-Powdercoat CRS Housing is standard. Housing is vented to keep ballast cool in a wide range of operating temperatures.

REFLECTOR DESIGN: Standard white ballast cover is 90% reflective. Optional specular Miro4® & white reflectors available. Narrow and wide distribution offered. Consult AEI for other options.

ELECTRICAL: 120 or 277V, 75°C programmed start ballasts are standard. Universal voltage or 347, 480V and 90°C ballasts as well as other options are available upon request. Emergency ballasts available.

MOUNTING: Surface, Chain or Pendant mounting options available. See our Labor Saving Installation Guide for industry exclusive mounting designs.

LISTING: UL Listed for Damp Locations.

ORDERING GUIDE



BRINGING YOU OUT OF THE DARK AGES!

Fixture Model

T5CLS

Of Lamps
Wattage

1054

Voltage
Ballast Factor

[]

Lamp Color

[]

Fixture
Options

[]

Mounting

[]

CONSULT
AEILighting.com
for
Photometric
Information
On This
Fixture

OF LAMPS
10=10 Lamps
1000W Replacement for HID
WATTAGE
54=54W 4-foot Nominal Length
Consult Factory When Application
Requires Other T5 Wattages

VOLTAGE
12=120V 27=277V 34=347V
48=480V UNI=120-277V
90C=120-277V 90°C
30=3000K 35=3500K
41=4100K 50=5000K 65=6500K
Leave Blank if No Lamps

SENSORS
OCI=Aside Sensor OC3=360 Degree Sensor
OC1T=360 Degree Low Temp Sensor
Consult Factory For More Sensor Options.
CORDS / PLUGS
X'C=Length + Cord Only
X'CP=Length/Cord + Style/Plug
Consult Factory For More Options

BALLASTS
E=XXXX-Emergency Ballast/Lumens
DIM=Dimming Ballast
Consult Factory For Detailed Ballast Options
HOUSING/REFLECTORS
UL=Uplight WH=White Reflector
LB=Low-Bay
OTHER
CTD=Coated Lamps TG=Tube Guards
CST=Custom
Consult Factory For Custom Applications &
Custom Ordering Number

VH=V-Hook HK=3/4" Hook
GPX=Gripple + Style (L,S,T,Y)
Consult Options Guidelines For
Gripple Details
HUB=3/4" Hub
X'ST=Length + Galvanized Stem
SB=3/4" Side Box Assembly
Hub and Stem Optional
SP=3/4" Single Point Bracket
Hub and Stem Optional

AEI LIGHTING INC.
1113 West Birchwood Avenue
Mesa, AZ 85210
TEL 480.733.6594
FAX 480.733.6596
WEB www.aeilighting.com

Project Name _____ Fixture Type _____

Catalog # _____ Quantity _____

ADVANCED ENERGY IDEAS, INC.

T5CLS-1054